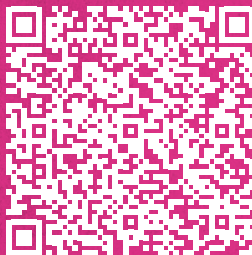


12-21 SEPTEMBER 2025

FREE

Rochdale Event Guide



 /heritageopendays

 @heritageopendays

 @heritageopendays

Welcome

We are delighted to be part of the National Heritage Open Day Festival 2025, putting the spotlight on some of the fascinating places and history that has shaped our borough.

It's even more significant as this year we are Greater Manchester's Town of Culture. Rochdale is full of unique stories just waiting to be uncovered and culture is such an important part of our identity. Our town is packed with passion, pride and community spirit and we have so much to offer from stunning countryside, lakes and parks, to amazing buildings, churches and architecture, steeped in history, as well as a busy events calendar throughout the year, one day won't be enough to see everything and we look forward to seeing you again soon.

Councillor Sue Smith
Cabinet member for communities and co-operation, Rochdale Borough Council

Rochdale Old Fire Station

1

📍 Fireground, Old Fire Station, Maclure Road, Rochdale, Greater Manchester, OL11 1DN

🌐 www.fireground.org.uk

Located at the former Rochdale Fire Station, which opened in 1933 this was the most technically advanced station in the country. This was repurposed in 2021 as Greater Manchester's Fire Museum Fireground and is a place to explore, preserve and make accessible the history of fire, fire engineering and the fire and rescue services in the Greater Manchester Region. The museum is also an art deco gem from the 1930s.

📅 **Timing of Activities** Saturday 20th September 10:00-16:00

Fireground Museum is offering free entry to the Museum for the day, along with guided tours of the building.



2

The Church of St-Mary -in-the-Baum

4-6 St. Marys Gate, Rochdale,
Greater Manchester, OL16 1DZ

www.rochdaleparishchurches.co.uk

One of three Grade 1 listed buildings in Rochdale, The Church of St-Mary's-in-the-Baum was founded in 1742 when a subscription deed outlined the need for a 'chapel of relief' in Rochdale due to the growing numbers of parishioners.

Timing of Activities Saturday 13th September 10:30-14:00.
Sunday 14th September 10:30-12:00.

Open for public viewings and tours of the building.



3

Bamford Chapel & Norden United Reformed Church

Norden Road, Rochdale, Greater Manchester, OL11 5PQ

www.bcnchurch.org.uk

Dating back over 224 years, Bamford Chapel has been at the heart of the community since 1801.

Timing of Activities Saturday 20th September 13:00-16:00
Illustrated talk: 14:00.
Sunday 21st September 13:00-16:00
Illustrated talk: 14:00 .

Open for public viewings and an illustrated talk to learn more about the fascinating social history of this non-conformist chapel.




4

St Paul's Church (Explore the architectural heritage of NW/ Rochdale)

St Pauls church, Edenfield Road,
Rochdale, Greater Manchester, OL12 7SL

The Church of St Paul consecrated in 1861 is a grade II Listed Building and has been a fixture of the village of Edenfield for many years.

 **Timing of Activities** Saturday 20th September 10:00–14:00.
School choir: 14:00–14:30.


An outdoor walk from St Paul's Church down the Naden Valley through ancient woodland and fields, exploring local industrial and architectural heritage, to St Michael's church in Bamford, calling in at St James' church, Ashworth on the way back to St Paul's.



5

Milnrow Parish Church (St James the Apostle)

St. James Street, Milnrow, Rochdale,
Greater Manchester, OL16 3JT

 www.stjamesmilnrow.co.uk

The Church of St James the Apostle is the Anglican (Church of England) Parish Church for the village of Milnrow. The church is Grade II Listed and has been on its present site for over 155 years.

 **Timing of Activities** Friday 19th September 11:00–16:00.
Saturday 20th September 10:00–16:00.
Sunday 21st September 11:00–15:00.

Over the past few years, the church has undergone some major restoration and refurbishments and will be opening its doors for viewing and tours of the building. The churchyard includes the final resting place of one of the Original Rochdale Pioneers, David Books and a number of war graves are situated here too.



6

Stone and Story: Top of Leach Rendezvous

📍 Catley Lane Head, Rochdale, Greater Manchester, OL12 6BN
 🌐 www.rmnf.org.uk

Rooley Moor Neighbourhood Forum is a registered charity, which was set up with one common purpose and objective, to protect and enhance the neighbourhood around the Rooley Moor Area.

📅 Timing of Activities Sunday 21st September 10:00 (meet at the BBC plaque to walk with the group or make your own way. Route details are available in the waterproof box by the BBC Plaque just before the cattle grid in Catley Lane Head Village, BL12 6BN).

12:00–14:00 Picnic/Rendezvous.

Rooley Moor Neighbourhood Forum has organised a special gathering at "Top of Leach" with a picnic (bring your own) and photoshoot at Catley Lane Head. This is an opportunity to celebrate the beauty of Rooley Moor together.



7

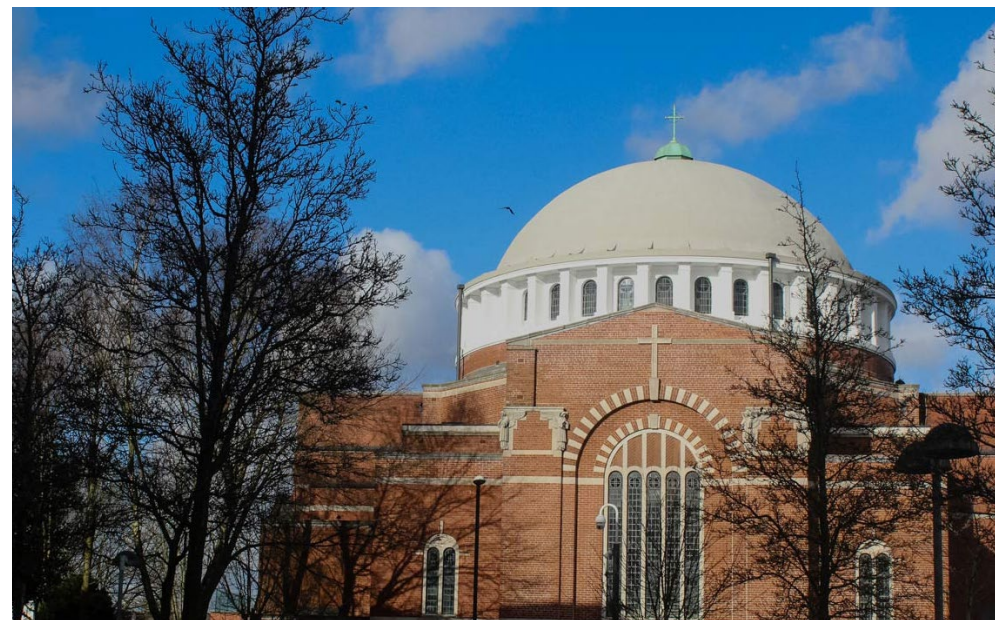
St John the Baptist Church

📍 Dowling Street, Rochdale, Greater Manchester, OL11 1EX
 🌐 www.stjohnthebaptistrc.org

A grade II Listed church was opened on the 14th June 1925 and so has just celebrated its centenary year. It houses one of the largest pieces of artwork, the Eric Newton (Oppenheimer) mosaic which was painstakingly restored in 2022/23. The church itself is iconic with its large white dome.

📅 Timing of Activities Wednesday 17th September 11:00–14:00.
 Saturday 20th September 11:00–15:00 (please note mass takes place at noon).
 Sunday 21st September 11:00–15:00.

The church will be open for tours of the building and an opportunity to see the Oppenheimer mosaic and some of the previous heritage projects including a selection of photographs taken by students from St Cuthbert's RC High School.



Stone and Story: The Heritage of Rooley Moor through History, Architecture & Conservation

📍 Catley Lane Head Village, Rooley Moor Road, Rochdale, Greater Manchester, OL12 6BN

🌐 www.rmnf.org.uk

Rooley Moor Neighbourhood Forum is a registered charity, which was set up with one common purpose and objective, to protect and enhance the neighbourhood around the Rooley Moor Area.

📅 Timing of Activities

Friday 12th September to Saturday 20th September (daily walks) 10:00–17:00. Free maps are available from the waterproof box near the BBC Plaque, just before the cattle grid in Catley Lane Head Village, BL12 6BN).

Organised by Rooley Moor neighbourhood Forum, these self-guided heritage trails lead you through the architectural gems of Catley Lane Head and the Prickshaw & Broadley Fold Conservation areas. Walking the Cotton Famine Road, discover the remarkable history and stunning landscapes of Rooley Moor.



Tour of Touchstones

📍 Touchstones, The Esplanade, Rochdale, Greater Manchester, OL16 5NQ

🌐 www.yourtruststrochdale.co.uk

Touchstones is a museum, gallery and arts centre located in a stunning Grade II building in Rochdale town centre. After closing the building to the public in September 2023, the capital redevelopment project is now around halfway through. Lots of changes have been made to the building already and the entire ground floor area will be reimagined as an exciting, dynamic and welcoming space when it re-opens in 2027.

📅 Timing of Activities

Friday 19th September 11:00 and 12:30.

Booking is essential for this activity/event.



Currently closed for redevelopment the Architects working on Touchstones will be leading tours of this Grade II museum, gallery and arts centre, so you can see how the capital redevelopment of this project is coming along.



Middleton Heritage Green Trail

📍 Moonraker Sculpture, Middleton Gardens,
Middleton, Greater Manchester, M24 6DU

🌐 www.visitrochdale.com/things-to-do/middleton-heritage-trail-p926101

Middleton Heritage Green Trail has been developed with funding from Historic England, Middleton Township, the Rochdale Development Agency and the Shared Prosperity Fund and produced by HPA Architects, along with local residents, historians and RBC and Rochdale Development Agency.

📅 **Timing of Activities** Saturday 20th September 14:00–16:00
(meet your tour guide Alexandra at the Moonraker Sculpture, Middleton Gardens M24 6DU).

Join us for this guided walk, which will take you from Middleton Town Centre, through Middleton's parks and green spaces, including the tranquility of the Memorial Gardens and celebrating Middleton's hidden gems.



Middleton Heritage Red & Blue Trail

📍 Car park by St Leonard's Church, St Leonard's Church, St Leonard's Square, Middleton, Greater Manchester, M24 6DF

🌐 www.visitrochdale.com/things-to-do/middleton-heritage-trail-p926101

Middleton Heritage Red and Blue Trail has been developed with funding from Historic England, Middleton Township, the Rochdale Development Agency and the Shared Prosperity Fund and produced by HPA Architects, along with local residents, historians and RBC and Rochdale Development Agency.

📅 **Timing of Activities** Sunday 21st September 10:30–13:00
(meet your tour guide Alexandra at the car park at St Leonard's Church, St Leonard's Square, Middleton M24 6DF).

Join us for this guided walk, which will take you around Middleton's renowned Golden Cluster of Architecture and History, as well as its mills and town centre.



Middleton Heritage Red Trail

📍 Car park by St Leonard's Church, St Leonard's Church, St Leonard's Square, Middleton, Greater Manchester, M24 6DJ

🌐 www.visitrochdale.com/things-to-do/middleton-heritage-trail-p926101

Middleton Heritage Red Trail has been developed with funding from Historic England, Middleton Township, the Rochdale Development Agency and the Shared Prosperity Fund and produced by HPA Architects, along with local residents, historians and RBC and Rochdale Development Agency.

📅 **Timing of Activities** Saturday 20th September 10:30–12:30
(meet your tour guide Alexandra at the car park at St Leonard's Church, St Leonard's Square, Middleton M24 6DF).

Join us for this guided walk, which will take you Join us for this guided walk, which will take you around Middleton's renowned Golden Cluster of Architecture and History.



Rochdale Parish Church of St Chad

📍 Rochdale Parish Church of St Chad, Sparrow Hill, Rochdale, Greater Manchester, OL16 1QT

🌐 www.rochdaleparishchurches.co.uk

St Chad's Church was the mother church of the ancient parish of Rochdale and was founded before 1170, possibly on an Anglo-Saxon Site. Records of vicars go back 830 years. It forms part of the Diocese of Manchester and is an active place of worship and community hub for the town and outlying suburbs.

📅 **Timing of Activities** Friday 12th September 14:00–16:00.
Saturday 13th September 14:00–16:00.
Sunday 14th September 12:30–16:00.

Open to the public for tours, take in the splendour of the stonework which dates back to the 13th and 14th centuries and its beautiful glass windows, including the 'Faith, Hope and Charity' window by Edward Burne-Jones.



14

Rochdale Town Centre Heritage Trail

📍 Rochdale Train Station, Station Road, Rochdale, Greater Manchester, OL11 1DR

🌐 www.rochdalecreates.co.uk

With Funding provided by the UK Shared Prosperity Fund, Rochdale Development Agency has designed a Heritage Trail which showcases Rochdale Town Centre's venues and organisations and the town's rich history, culture and heritage.

📅 **Timing of Activities** Saturday 13th September 11:00 and 14:00.
Sunday 14th September 12:00.

A guided tour of the Trail which starts at Rochdale Train Station and will take in a number of key venues, attractions and hidden gems and the tour guide will tell stories of people and places and how cultures have woven together over the years.



Historic Court Room Tours

15

📍 Rochdale Town Hall, The Esplanade, Rochdale, Greater Manchester, OL16 1AZ

🌐 www.rochdaletownhall.co.uk

Lavishly decorated and now beautifully restored, the Historic Court Chamber housed within Rochdale Town Hall, has more than a few stories to tell. Here the wealthy Magistrates of Rochdale sat in judgement over opportunistic petty criminals and hardened habitual offenders.

📅 **Timing of Activities** Friday 19th September 14:00–15:00.
Saturday 20th September 14:00–15:00.
Sunday 21st September 14:00–15:00.



A guided tour of what was originally a courtroom and is now the Council Chamber, this tour will provide stories of the accused and the accusers and you will discover what drove ordinary Rochdaliens into a life of crime. Find out what lay in store for the petty criminals and habitual offenders beyond the courtroom.



Rochdale Town Square History Tour

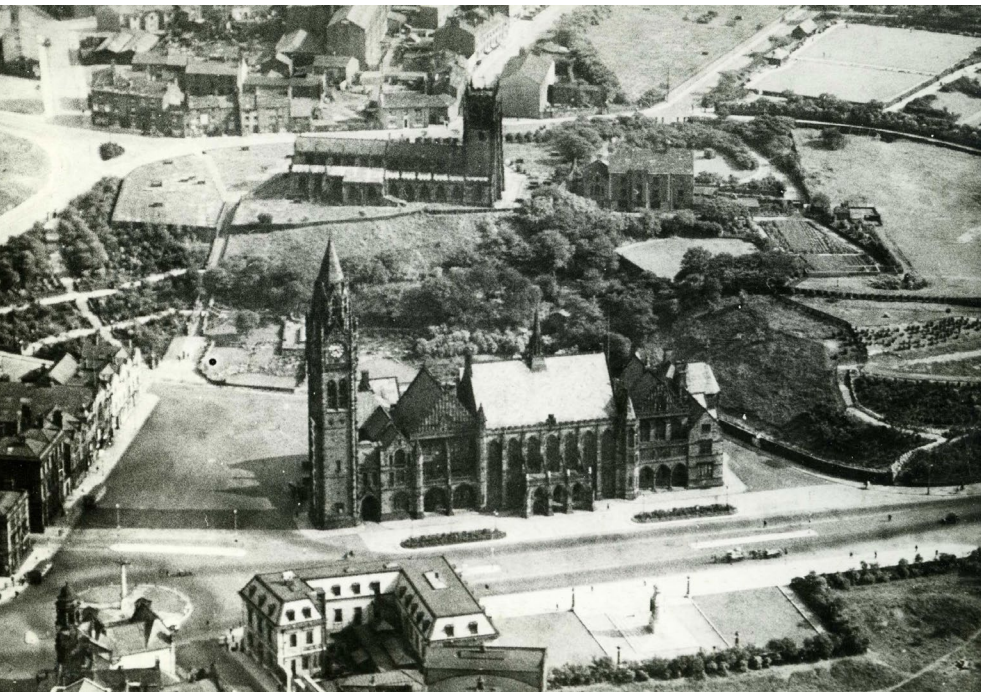
📍 The Flying Horse Hotel (MEET OUTSIDE), 37 Packer Street, Rochdale, Greater Manchester, OL16 1NJ

🌐 www.rochdalecreates.co.uk

Rochdale Town Square History Tour has been developed by Rochdale Development Agency's Broadfield Slope Project Team. The jam-packed tour tells the story of Rochdale Town Square's architecture and has been informed by 5 years of archaeological digs and research.

📅 **Timing of Activities** Saturday 20th September 11:00–12:00 and 13:30–14:30.

From the medieval period to the industrial revolution and beyond, this historical tour, guided by an archaeologist, uncovers the histories of the square's architecture, including the Town Hall, Broadfield Park Slopes, Packer Street and Rochdale Bridge.



Stories of the Gank- Rochdale Town Hall

📍 Rochdale Town Hall, The Esplanade, Rochdale, Greater Manchester, OL16 1AZ

🌐 www.rochdalecreates.co.uk

Stories of the Gank has been developed by Rochdale Development Agency's Broadfield Slope Project Team.

📅 **Timing of Activities** Friday 12th September 10:00–16:00.
Saturday 13th September 10:00–16:00.
Sunday 14th September 10:00–16:00.

An exhibition that aims to reflect upon the working-class stories and housing conditions within Rochdale's Packer Street and surrounding area. This area was historically titled the Gank due its reputation as one of the worst slums in Rochdale during the Victorian era.



St Andrew's CE Church, Dearnley Open Weekend

📍 St Andrew's CE Church, Arm Road, Rochdale, Greater Manchester, OL15 8JE

🌐 www.standrewsdearnley.co.uk

Consecrated in 1862, St Lukes Heywood is a grade II listed building and probably the most architecturally important building in Heywood, with special emphasis on it's extensive collection of mid-Victorian stained glass.

📅 **Timing of Activities** Saturday 13th September 10:00–17:00
including floral demo at 11:00.
Be a chorister 12:00–15:30 and take
part in an even song concert at 16:00.

Explore the beautiful features of this Victorina Gothic Church, with its impressive stained glass windows, reredos, pulpit and war memorial. As part of the Heritage Open Day Festival, the church will be showcasing the archives which are not usually on show.



St Luke's Church Heywood

📍 York Street, Heywood, Greater Manchester, OL10 4NN

🌐 www.stlukesheywood.org.uk

Consecrated in 1862, St Lukes Heywood is a grade II listed building and probably the most architecturally important building in Heywood, with special emphasis on it's extensive collection of mid-Victorian stained glass.

📅 **Timing of Activities** Saturday 20th September 10:00–14:00.
Sunday 21st September 14:00–15:30.

Explore the beautiful features of this Victorina Gothic Church, with its impressive stained glass windows, reredos, pulpit and war memorial. As part of the Heritage Open Day Festival, the church will be showcasing the archives which are not usually on show.



Middleton Parish Church (St Leonard's Church)

📍 St. Leonards Square, Middleton, Greater Manchester, M24 6DJE

🌐 www.middletonparishchurch.org.uk

Middleton Parish Church or St Leonard's sits high on the hill above Middleton town centre and is the last great medieval church in the wider Manchester area, having been sensitively restored and preserved.

📅 **Timing of Activities**

Friday 12 th September	13:00–16:00.
Saturday 13 th September	13:00–16:00.
Sunday 14 th September	13:00–16:00.
Friday 19 th September	13:00–16:00.
Saturday 20 th September	13:00–16:00.
Sunday 21 st September	13:00–16:00.

Tours of the building including an insight into the Flodden Memorial Window of 1515 and rare brasses, including Major General Ralph Assheton in full Cromwellian uniform. There is also an opportunity to try brass rubbing.



Hare Hill House; celebrating 250 years

📍 Hare Hill House, Hare Hill Park, Littleborough, Greater Manchester, OL15 9HE

🌐 www.harehill.co.uk

Originally the home of four generations of the Newall family from 1775 until the 1900s, a family which played a significant role in the development of Littleborough as a thriving town. The grounds of the House became Hare Hill Park, now a Green Flag park with several Grade II listed features.

📅 **Timing of Activities**

Saturday 13 th September	11:30 and 14:30 (Guided tour of the Newall trail).
Sunday 14 th September	11:00 - and 16:00 (Open House with guided tours) .

Hare Hill House is celebrating a big anniversary this year, it is the 250th wedding anniversary celebrations of Lawrence and Elizabeth Newall, the first occupants of the then new Hare Hill House in 1775. There will be a guided walk around the Newall Trail approx. 2 miles around Littleborough to explore the impact the Newall's had on the town and a guided tour of the House, with its emerging 250 year timeline, an exhibition of Littleborough's architecture and historic interest and an opportunity for younger visitors to dress up and be photographed. With a pop up cafe serving homemade cakes.



Long Street Methodist Church and School

97 Long Street, Middleton, Greater Manchester, M24 6UN

www.artsandcraftschurch.org

Built in 1899 and Grade II listed, Long Street Church and Schools form part of Middleton's 'Golden Cluster' of historic buildings, this Arts and Crafts inspired church and former schoolrooms is a masterpiece designed by Edgar Wood (1860-1935).

- Timing of Activities**
- Saturday 13th September 10:30-16:00
(Walking tour of conservation area 14:00-15:30).
 - Sunday 14th September 13:00-16:00 (talk on artist Kathy Schuftan 14:00-15:00).
 - Wednesday 17th September 10:30-16:00.
 - Saturday 20th September 10:30-16:00.
 - Sunday 21st September 13:00-16:00.

As part of this year's Heritage Festival there will be 3 exhibitions:

- 1) A series of drawings by Edgar Wood documenting the building of the Manchester Ship Canal.
- 2) On the 80th anniversary of the end of World War II, there will be paintings on display by Kathy Schuftan a German Jewish artist, who worked at Manchester Academy of Fine Art.
- 3) Display of work by local artist Catherine Earl. Walking tour of the Conservation area and a talk on the artist Kathy Schuftan by Hephzibah Yohannan.

Hollingworth Lake Heritage Boat Tour

Hollingworth Lake Water Activity, Hollingworth Lake, Littleborough, Greater Manchester, OL15 0DQ

www.yourtrustrochdale.co.uk/whats-on/events/hollingworth-lake-heritage-boat-tour/

Hollingworth Lake Water Activity Centre, part of Your Trust, Rochdale Boroughwide's Cultural and Leisure Trust who manage a number of key culture and leisure destinations and venues across the Borough of Rochdale. The organisation run a number of water activities at Hollingworth Lake, including boat tours.

- Timing of Activities**
- Tuesday 16th September 11:00, 13:00 & 14:00
 - Wednesday 17th September 11:00, 13:00 & 14:00
 - Friday 19th September 11:00, 13:00 & 14:00
 - Sunday 21st September 11:00, 13:00 & 14:00



(This 45 minute boat tour is the ideal way to learn about the many interesting facts in a relaxed and friendly atmosphere. Booking essential, under 16's must be accompanied by an adult.)

Hollingworth Lake Heritage Boat Tours will be free of charge to visitors throughout the Heritage Open Day Festival. Discover the hidden history of Hollingworth Lake from it's beginnings in 1794 to feed the Rochdale Canal, to becoming known as 'The Weighvers' Seaport' and a favourite Victorian tourist attraction through to its role in great sporting achievements and more.





 /heritageopendays

 @heritageopendays

 @heritageopendays

www.heritageopendays.org.uk